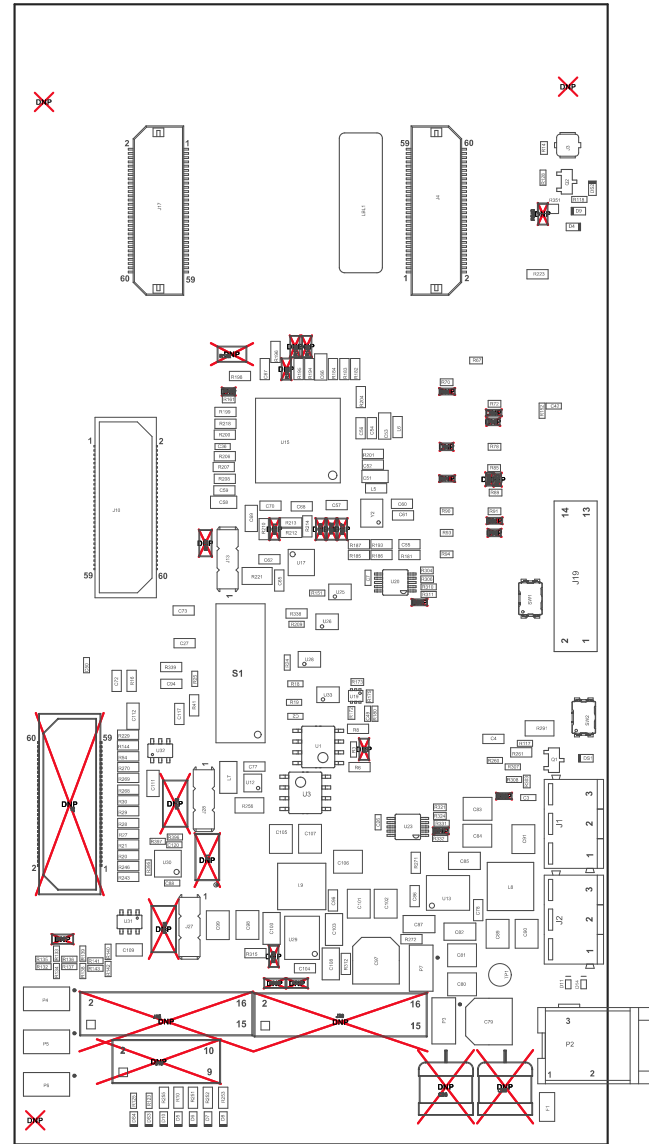


Z21 ■ Install **label** in silkscreened box after final wash. Text **shall** be 8 pt font. Text **shall** be per the Label Table in the PDF schematic.

Z22 ■ These assemblies are ESD sensitive. ESD precautions **shall** be observed.

Z23 ■ These assemblies must be clean and free from **flux** and **all** contaminants. Use of no **clean flux** is not acceptable.

Z24 ■ These **assemblies** must comply with workmanship standards IPC-A-610 Class 2, **unless** otherwise specified.

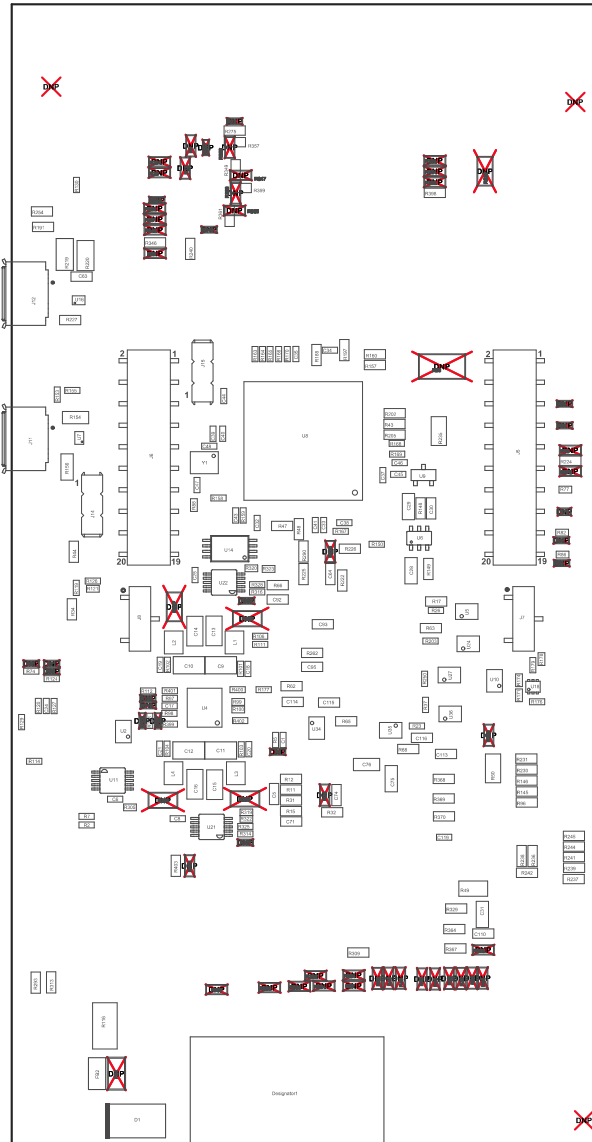


COMPONENTS MARKED 'DNP' SHOULD NOT BE POPULATED.

ASSEMBLY VARIANT:

001

PCB VIEWED FROM TOP SIDE	BOARD #:	PROC074	REV:	A	SVN REV:	Not In VersionControl
M5 Assembly Top	TID #:	N/A				
PLOT NAME = Top Assembly Drawing	GENERATED :	9/5/2018	12:25:51 PM	TEXAS INSTRUMENTS		



COMPONENTS MARKED 'DNP' SHOULD NOT BE POPULATED.
ASSEMBLY VARIANT: 001

PCB VIEWED FROM BOTTOM SIDE	BOARD #: PROC074	REV: A	SUN REV: Not In VersionControl
M6 Assembly Bottom	TID #: N/A		
PLOT NAME =	Bottom Assembly Drawing	GENERATED : 9/5/2018 12:25:54 PM	TEXAS INSTRUMENTS